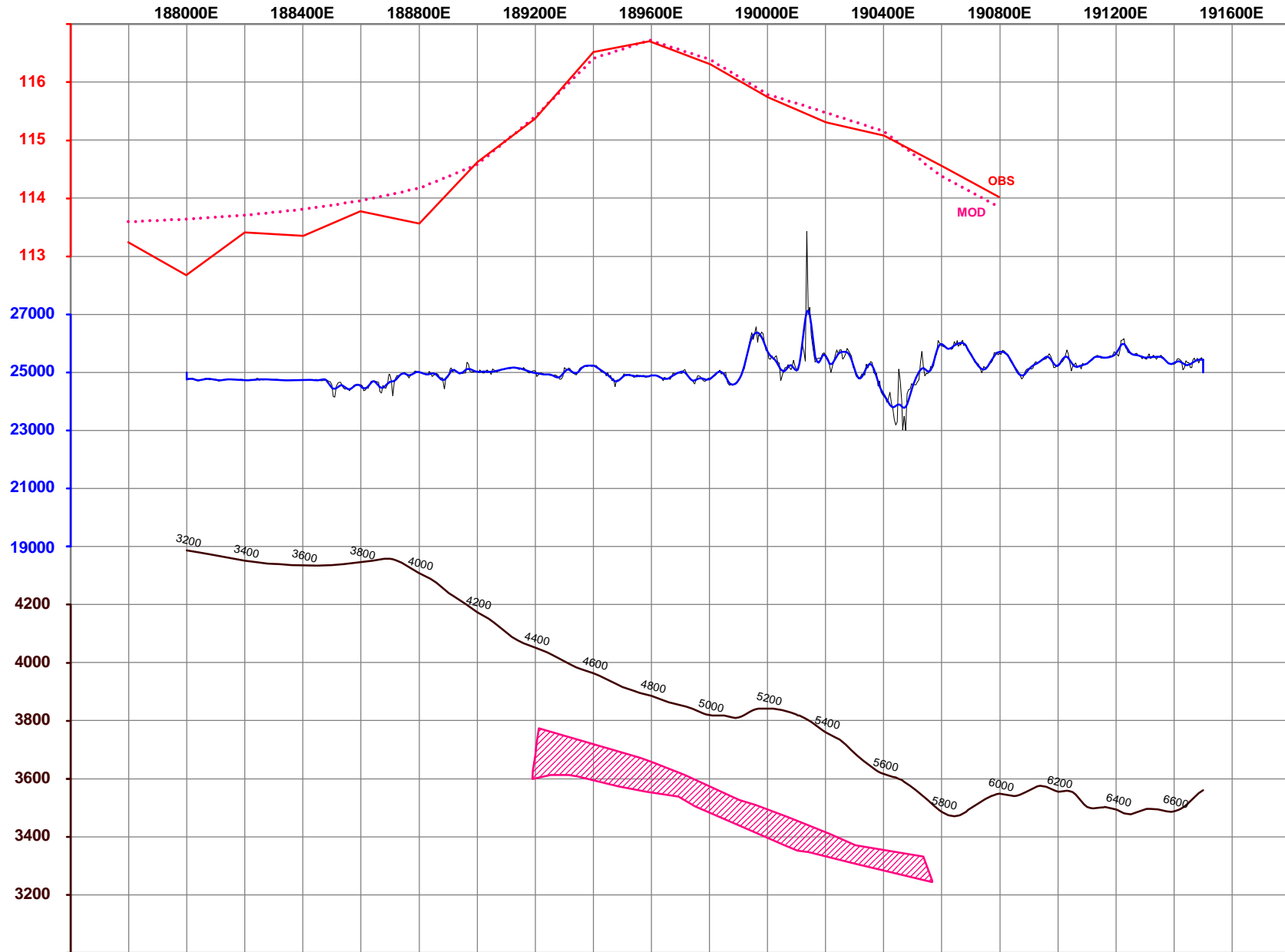


# GEOPHYSICAL SURVEY SECTION 42600N



**VAL D'OR  
GEOFISICA**

**VDG DEL PERU  
S.A.C.**

**MINERA CUERVO S. A. C.**  
CERRO CCOPANE PROJECT  
CUSCO, PERU

**SECTION L42600N**  
Date: May, 2009  
Reference: 09-P362